

TRACT NO.	OWNERSHIP	ACREAGE	UNIT %
1	ROSS L. ALLISON, ET AL	12.861	1.9892%
2	WANDA ALLISON BERRY, ET AL	29.908	4.6257%
3	ROSS L. ALLISON, ET AL	32.219	4.9830%
4	WORD HOLLEY WELLS, ET AL	106.725	16.5064%
5	WORD HOLLEY WELLS, ET AL	40.274	6.2288%
6	WORD HOLLEY WELLS, ET AL	207.409	32.0784%
7	WORD HOLLEY WELLS, ET AL	32.974	5.0998%
8	EDWIN JERRY THOMAS, ET AL	6.331	0.9792%
9	WORD HOLLEY WELLS, ET AL	56.182	8.6892%
10	HEWEY BAGLEY INC., ET AL	21.003	3.2483%
11	WORD HOLLEY WELLS, ET AL	100.684	15.5720%
	TOTAL	646.568	100.0000%

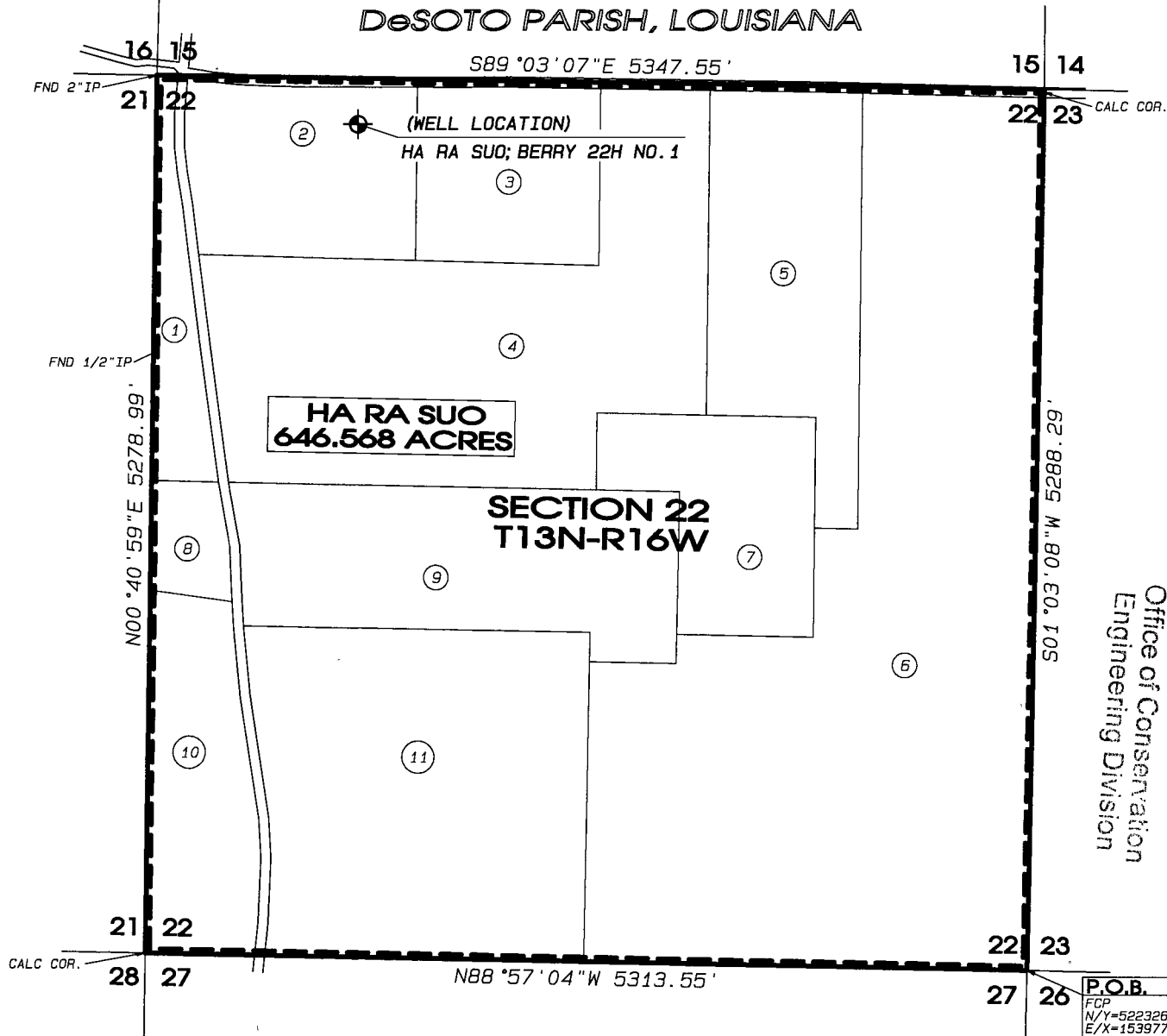
SCALE: 1"=1000'

GRAPHIC SCALE 1"=1000'



0 1000

DeSOTO PARISH, LOUISIANA



Office of Conservation
Engineering Division

OCT 15 2018

RECEIVED

THIS SURVEY PLAT OF THE HA RA SUO IN THE BELLE BOWER FIELD, DESOTO PARISH, LOUISIANA ADOPTED BY THE OFFICE OF CONSERVATION ORDER NO. 312-G-8, EFFECTIVE DECEMBER 8, 2009, IS HEREBY ACCEPTED INsofar AS IT SHOWS THE EXTERIOR LIMITS OF THE HA RA SUO, CREATED BY SAID ORDER, AND SAID PLAT IS HEREBY INCORPORATED BY REFERENCE IN SAID ORDER.

BATON ROUGE, LOUISIANA

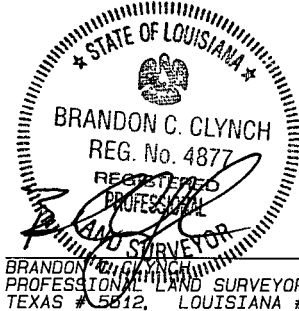
OFFICE OF CONSERVATION
OF THE STATE OF LOUISIANA
BY:

THE REQUIREMENTS FOR UNIT PLATS AND SURVEY PLATS ADOPTED BY THE COMMISSIONER OF CONSERVATION HAVE BEEN COMPLIED WITH IN ALL RESPECTS.

NOTE:

1. GEOGRAPHIC FEATURES AND LEASE INFORMATION OUTSIDE OF UNIT PERIMETER MAY NOT BE SHOWN.
2. THE SURVEYOR DID NOT ABSTRACT OR RESEARCH THE TITLE TO THE MINERAL RIGHTS OF THE SUBJECT TRACTS, AND WAS DEPENDANT ON INFORMATION, DOCUMENTS AND/OR TITLE OPINIONS SUPPLIED BY OTHERS.
3. THIS PLAT IS BASED ON FIELD SURVEYS AND INFORMATION REVIEWED BY THE SUPERVISING PROFESSIONAL LAND SURVEYOR THROUGH THE LAST REVISION DATE SHOWN HEREON AND IS SUBJECT TO REVISION PENDING DISCOVERY OF NEW EVIDENCE.
4. ALL BEARINGS HEREON ARE BASED ON THE STATE PLANE COORDINATE SYSTEM FOR LOUISIANA (NORTH ZONE-1927 DATUM).

I CERTIFY THAT THIS PLAT REPRESENTS THE RESULTS OF A SURVEY PERFORMED UNDER MY SUPERVISION IN ACCORDANCE WITH THE APPLICABLE STANDARD OF LAC 43-XIX. CHAPTER 41 & LAC 46-LXI CHAPTER 2911.



Surveying & Mapping By
ARK-LA-TEX SURVEYING CO., INC.
Texas Firm Registration No. 10093700
Louisiana Firm Registration No. 291

305 W. Rusk Marshall, Texas (903) 938-9939

Scale: 1" = 1000'	Drawn By: JLS	Job No.: 34106
Date: 10/10/2018	Surveyed By: BCC	File No.: IND-115

INDIGO MINERALS LLC
HA RA SUO
ORDER NO. 312-G-8
646.568 ACRES
BELLE BOWER FIELD
SECTION 22, T13N-R16W
DESOTO PARISH, LOUISIANA